

MANIFEST

v26



Projections



Selections from the 2007 iNDA

MANIFEST

CREATIVE RESEARCH GALLERY
AND DRAWING CENTER

volume 26

main gallery

PROJECTIONS

A Survey of Wall-based Sculpture

drawing room

SELECTIONS

From the 2007 International Drawing Annual

MANIFEST is a 501(c)(3) non-profit organization

MANIFEST VOLUME TWENTY-SIX

© 2008 MANIFEST PRESS

All rights reserved. No part of this publication may be reproduced in any way without written permission from the publisher. All rights in each work reproduced herein are retained by the artist/author.

Manifest Creative Research Gallery and Drawing Center

2727 Woodburn Avenue, P.O. Box 6218, Cincinnati, OH 45206

(513) 861-3638

First Printing - March 2008

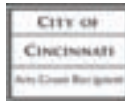
Designed by Jason Franz

Printed by PrintPelican.com

Cover images by Eric Troffkin and Dale Clifford

Back cover image by Stephen Mishol

Manifest is supported by funding from:



The NLT Foundation

The Greater Cincinnati Foundation

FineArtsFund





PROJECTIONS

A Survey of Wall-based Sculpture

March 7 - April 4, 2008

Kristina Arnold (Bowling Green, Kentucky)

Kevin Ewing (Athens, Ohio)

Shane Harris (Champaign, Illinois)

Richard Herzog (Tulsa, Oklahoma)

Adrienne Outlaw (Nashville, Tennessee)

Trish Ramsay (Columbus, Georgia)

Eric Troffkin (St. Louis, Missouri)

Jonathan Whitfill (Lubbock, Texas)

Glenn Williams (Ankeny, Iowa)

Curated by Jason Franz

Projections invited artists to submit works of art that are clearly sculptural, with three-dimensional space a key element, but which are not in any way floor or pedestal based. Works included here are either wall or ceiling mounted. This concept pushes the boundaries of the general expectation regarding the weightiness of sculptures, so often seen as being earth-bound and gravity defined.

ONE HUNDRED AND THIRTY artists from 33 states and 8 countries submitted 260 works to this exhibit. The final selection includes 11 works by 9 artists from nine states.





Kristina Arnold (Bowling Green, Kentucky)

Drip. glass, vinyl, string, pins, 2005

California





Kevin Ewing (Athens, Ohio)
American Muscle, vinyl, metal car emblems, 2006





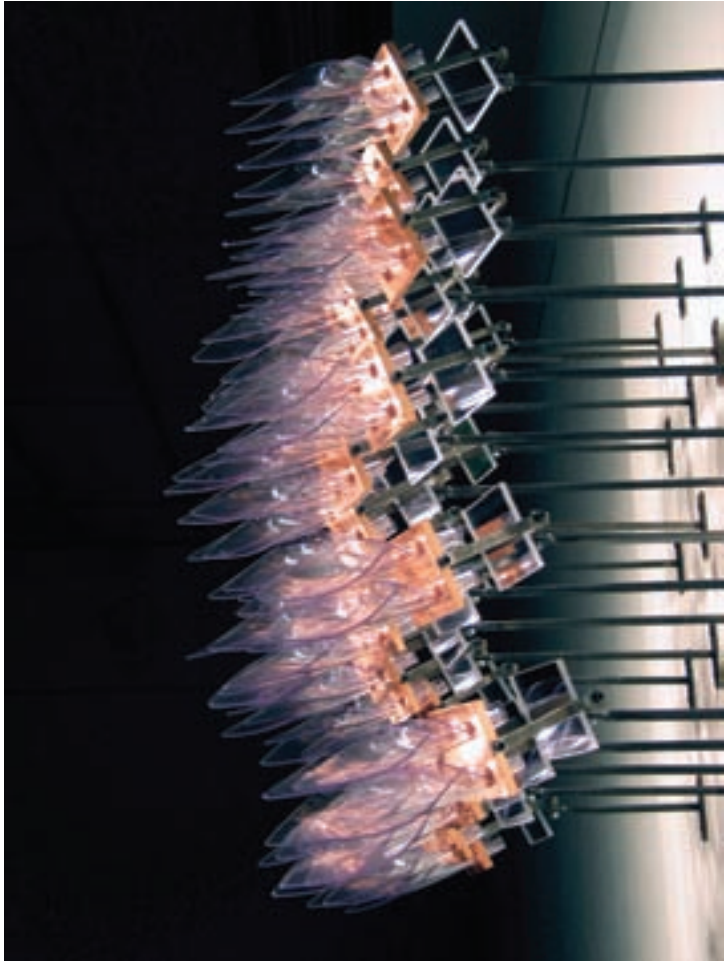
Shane Harris (Champaign, Illinois)
Let's talk about this! mixed media, 2007

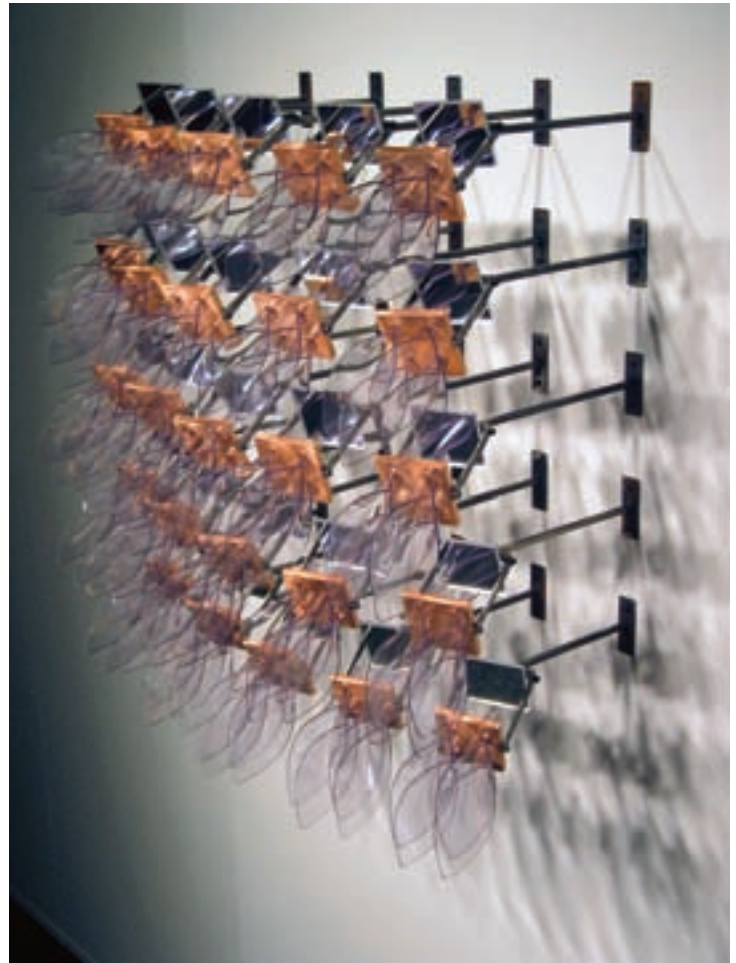


Shane Harris (Champaign, Illinois)
Adored, mixed media, 2007



Shane Harris (Champaign, Illinois)
Untitled, mixed media, 2007





Richard Herzog (Tulsa, Oklahoma)
As Simple As A Flower, vinyl, copper, acrylic mirrors, steel, 2005



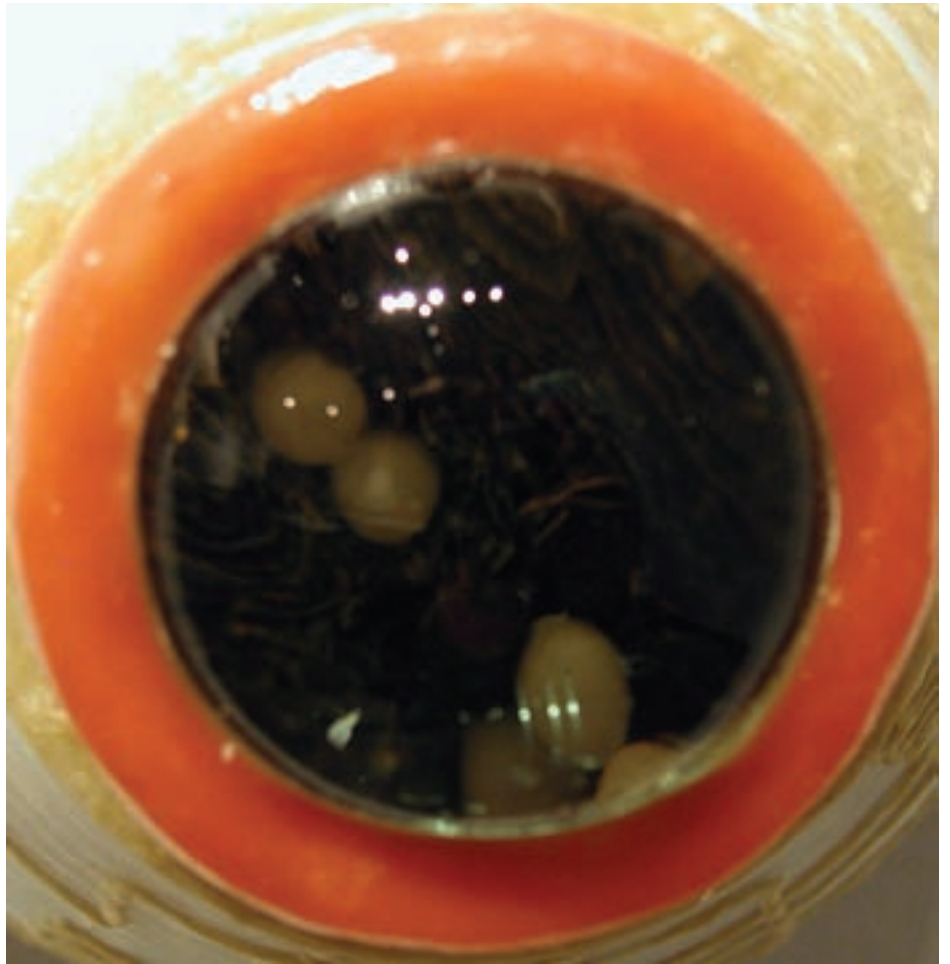
Hatch, 2005



Adrienne Outlaw (Nashville, Tennessee)
Fecund Series, mixed media, 2002-2007



Colony, 2005



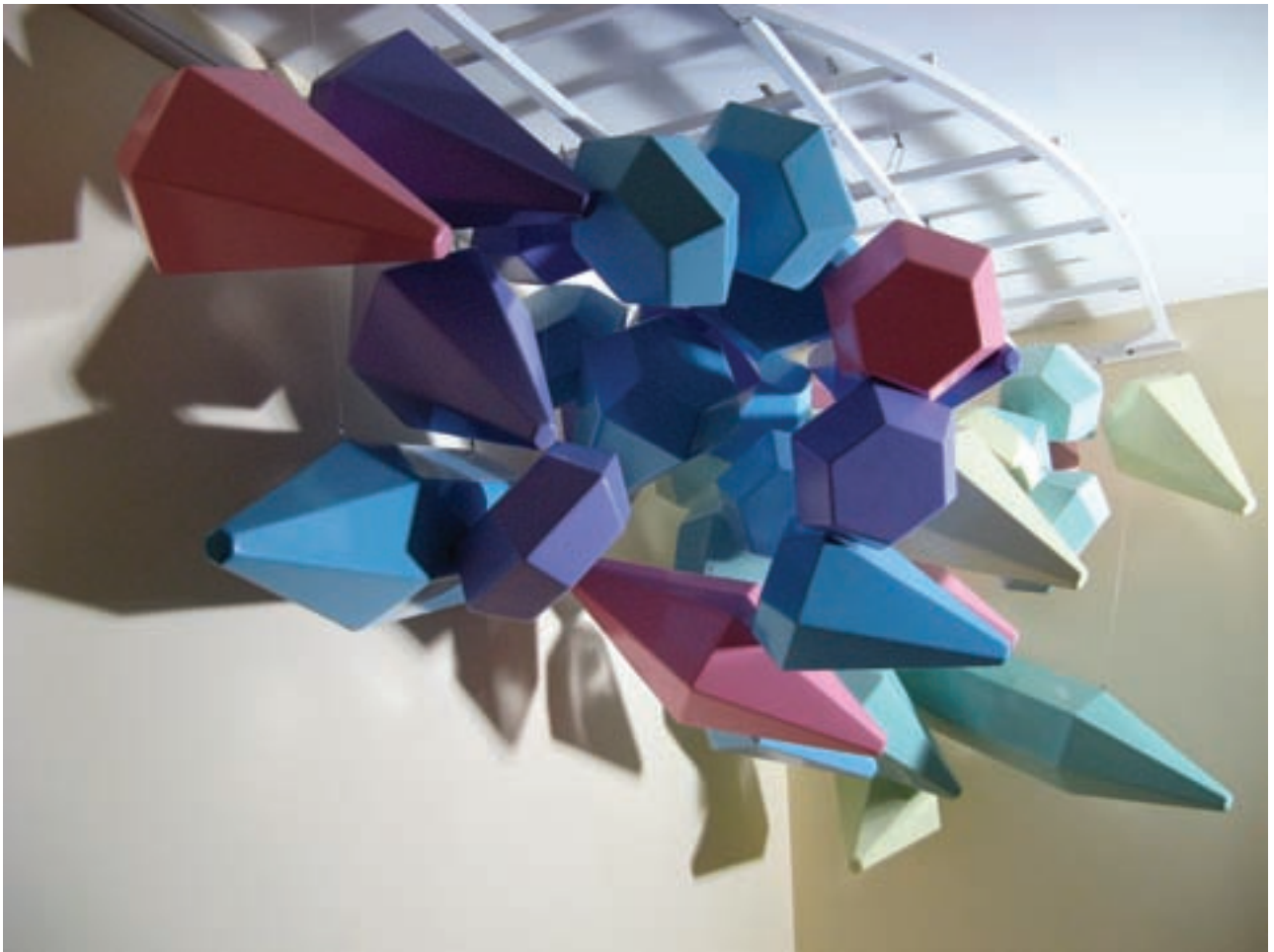
Colony (detail)





Trish Ramsay (Columbus, Georgia)
Thought of a Thought, brass, steel, nylon, 2007





Eric Troffkin (St. Louis, Missouri)
Lens Flare Cluster, roto cast plastic, 2007





Jonathan Whitfill (Lubbock, Texas)
Rowd, welded nails, printed paper, plastic coating, 2007



Glenn Williams (Ankeny, Iowa)
Spitting Knowledge, bronze, steel, and nugold, 2006



SELECTIONS

From the 2007 International Drawing Annual

March 7 - April 4, 2008

Dale Clifford

Heidi Jensen

Soomin Jung

David Mazure

Douglas Miller

Stephen Mishol

Reiner

Doug Russell

Curated by Jason Franz

Selections from the 2007 International Drawing Annual is the third annual presentation of this exhibit. It features ten handpicked works representing eight of the 48 finalists for the third annual iNDA exhibit-in-print competition. The exhibit is offered as a celebratory first-hand sneak preview sampling of the iNDA publication which itself will be available in June 2008.

Manifest received over 750 entires from a record number of artists and countries for the 2007 iNDA project.

The International Drawing Annual publication was conceived as an extension of Manifest's Drawing Center mission to promote, feature, and explore drawing as a rich and culturally significant art form through the pursuit of scholarly activities.

The goal of the International Drawing Annual is to support the recognition, documentation, and publication of excellent, current, and relevant works of drawing in the United States and beyond. All works included in each annual were made within the three years leading up to its publication.







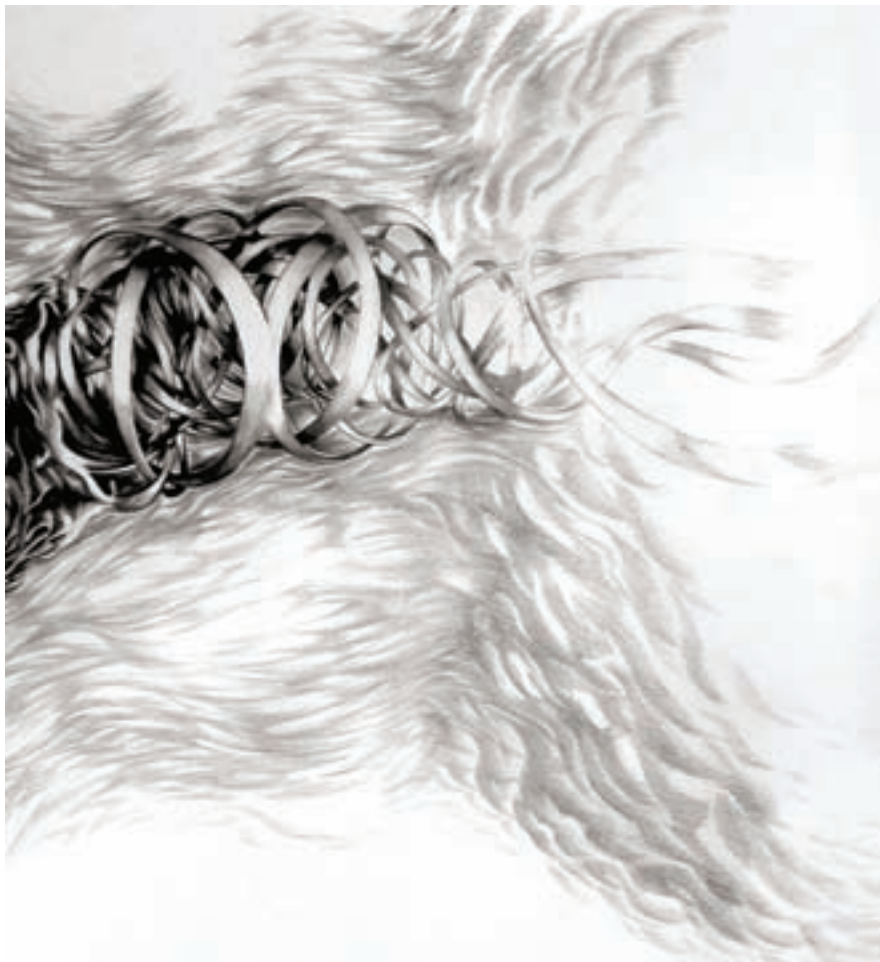
Dale Clifford (Atlanta, Georgia)
Unnatural Selection, linocut, 2007



Heidi Jensen (Jacksonville Beach, Florida)
Snatch, graphite, acrylic, 2007



Soomin Jung (San Antonio, Texas)
Oblivion, colored pencil on mylar, 2007



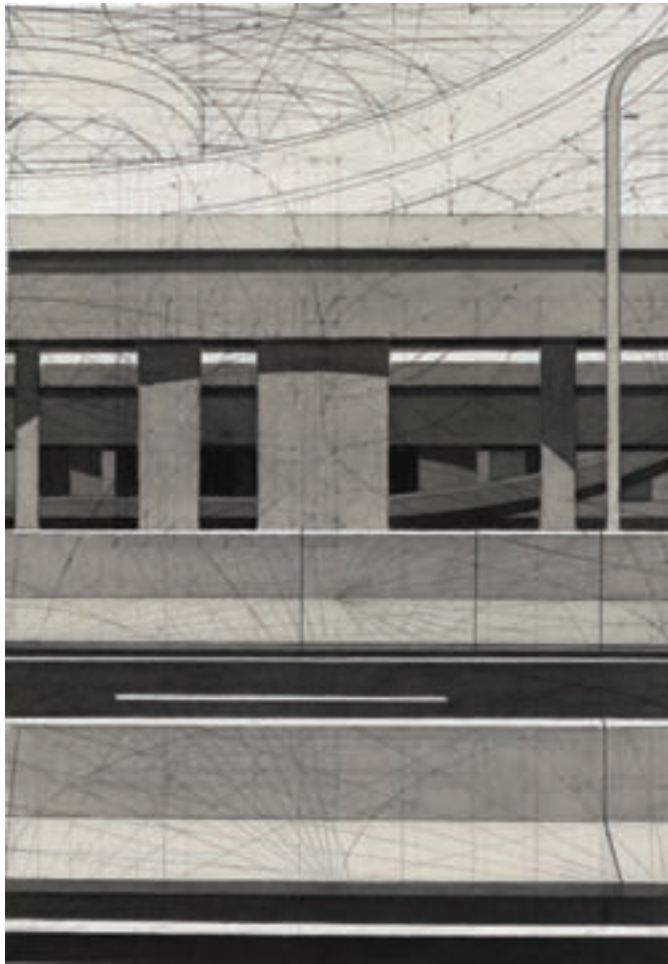
David Mazure (Mars Hill, North Carolina)
Pleroma, graphite, 2007



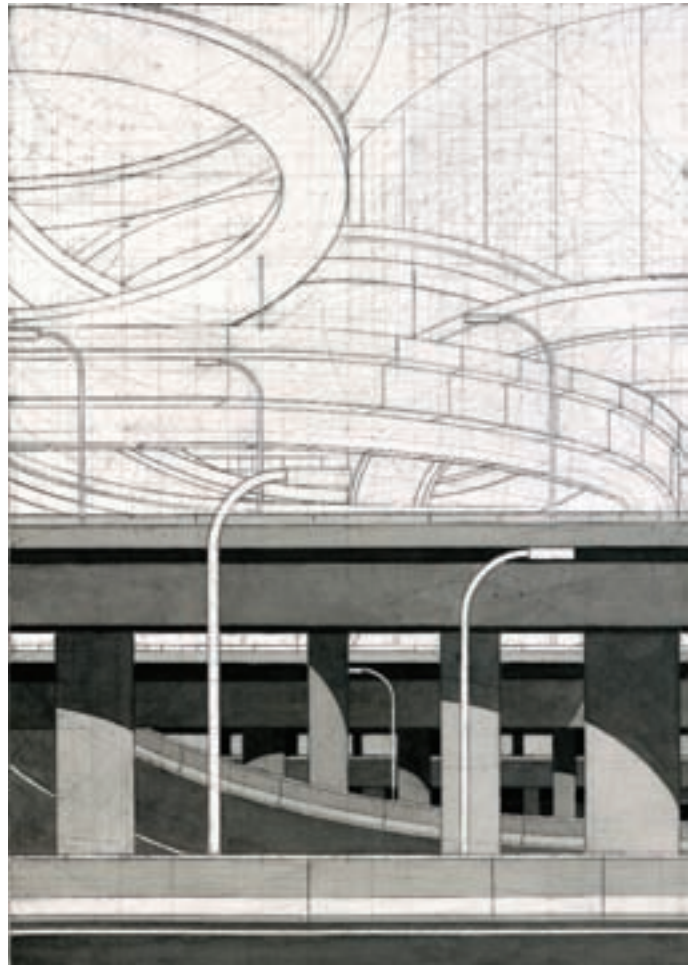
Douglas Miller (Louisville, Kentucky)
Peacock, ink, pencil on paper, 2007



Reiner (San Francisco, California)
Trying To See, charcoal on paper, 2007



Stephen Mishol (Lowell, Massachusetts)
Pull, ink and graphite on paper, 2007



Stephen Mishol (Lowell, Massachusetts)
Tamp, ink and graphite on paper, 2007



Doug Russell (Laramie, Wyoming)
Another Nature #7, prisma-color on paper, 2007



Doug Russell (Laramie, Wyoming)
Another Nature #4, prismacolor on paper, 2007

About Manifest

Founded in May of 2004, Manifest Creative Research Gallery and Drawing Center is a 501(c)(3) non-profit arts organization headquartered in the urban neighborhood of East Walnut Hills in Cincinnati, Ohio. The elegant street level exhibition space is minutes away from downtown Cincinnati, and the numerous academic institutions of higher learning in the region. It is also within easy walking distance of a diversely populated historic neighborhood with residents from all walks of life. The galleries are free and open to the public five hours a day, five days a week, presenting works by students and professionals from around the world. The Manifest Drawing Center Studio is located in the nearby Walnut Hills Essex Studios Complex.

Manifest is supported by grants and public donations and has the goal to support student professionalism, integrate the arts into the urban residential community and raise the bar on artistic standards. The mission also includes the exploration of the relationship between art and design, as well as the ongoing support and display of drawing in all its various forms.

Mission Statement:

Manifest enhances the role of art and design in society by cultivating and focusing the transformative power of creativity in the visual arts. Manifest benefits people in the global and local community, including professionals, students, and the public, by creating quality-centered experiences focused on contemporary visual arts and related activities in the context of creative exploration.

Executive Director

Jason Franz

Assistant Director

Tim Parsley

Board of Directors

Katherine Dintenfass

Jason Franz

Tamera Lenz Muenta

Brigid O'Kane

Andy Schaub

Manifest Associates

Robert Anderson

Matthew Litteken

Kevin Muenta

Trevor Ponder

Kim Shifflett

Matt Wizinsky

Interns

Liz Beard

Laura Fisher

Carrie Getz

Christina Kilbane

Anna Martinovich

Amanda Nurre (*senior intern*)

Elaine Potter (*senior intern*)

Heather Treas

Aaron Walker

Melinda Welch





MANIFEST
CREATIVE RESEARCH GALLERY
AND DRAWING CENTER

2727 woodburn avenue cincinnati, ohio 45206
513 861 3638
www.manifestgallery.org